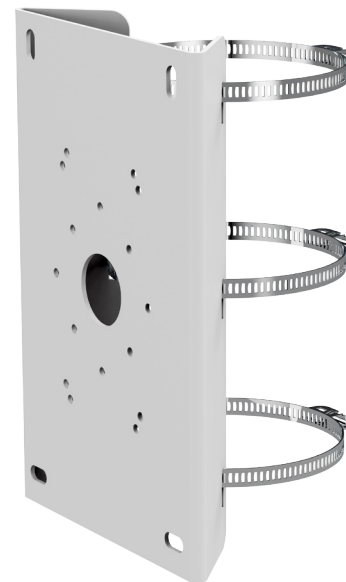


FEATURES

- Pole Mount for N2IPPTZ30X & HDPTZ33X
- Heavy Duty Steel Construction
- Compatible with Wall Mount included with:
N2IPPTZ30X & HDPTZ33X Cameras
N2PTZJB (Junction Box)
N2PTZPENDMT (Pendant Mount)

SUPPORTED MODELS

- N2IPPTZ30X & HDPTZ33X Wall Mount (Included with Camera)
- N2PTZJB (Junction Box)
- N2PTZPENDMT (Pendant Mount)

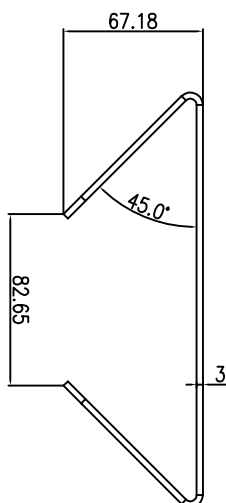


N2PTZPOLEMT

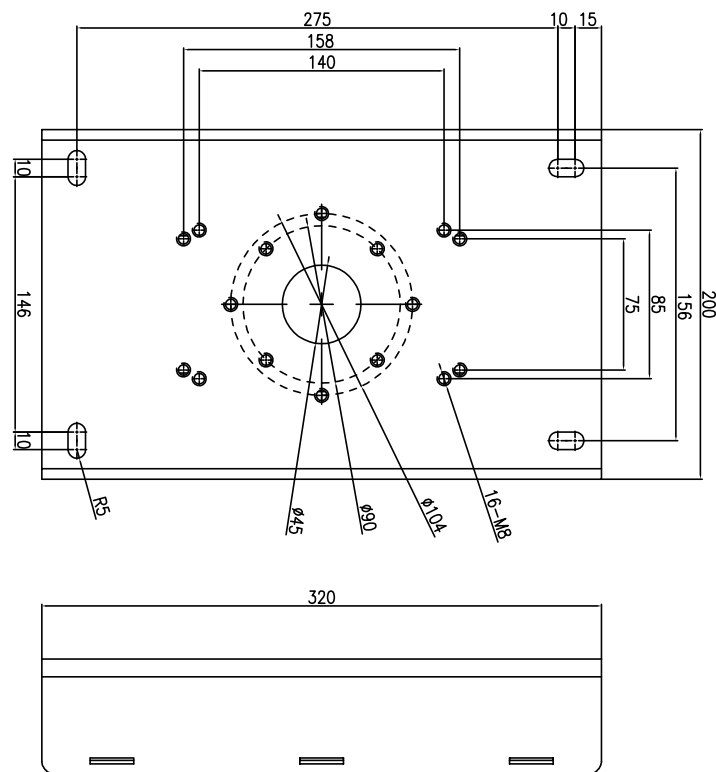
SPECIFICATIONS

General	
Material	Heavy Duty Steel Construction
Color	White
Product Dimensions	200mm x 320mm x 67.2mm / 7.9" (W) x 12.6" (H) x 2.6" (D)
Product Weight	3.2Kg / 7.5lb
Max Bearing Weight	24.25lb

DIMENSIONS



HOLE MARKINGS



* All specifications subject to change without notice for quality improvement