

4 Channel IP Kit

INCLUDES: 4-Channel N3NVR w/ 2TB Storage

4x 4MP IP, 2.8mm Eyeball Cameras with 100' IR, SD Slot



N3NVR4 FEATURES:

- ◆ Real Time 30FPS Recording
- ◆ 2 Terabyte Included Storage
- ◆ Up to 8MP Recording
- ◆ H.265 Recording Compression
- ◆ NorthernView Mobile App for iPhone, iPad & Android™
- ◆ Supports P2P Operation
- ◆ Free CMS Software
- ◆ Integrated 40W POE Switch
- ◆ Included Mouse for NVR Control
- ◆ USB for Mouse Control & Copying Video
- ◆ Simultaneous HDMI & VGA Outputs
- ◆ Up to 4 Channel Synchronous Playback
- ◆ Built-In Audio & Alarm
- ◆ Supports 2-Way Audio



NORTHERN VIEW

Free Mobile App for iPhone,
iPad, Android™ & Android™ Tablets

CAMERA FEATURES:

- ◆ Up to 25FPS, 4MP Max Resolution
- ◆ H.265 Recording Compression
- ◆ Digital Wide Dynamic Range
- ◆ Fixed Focal 2.8mm IR Lens
- ◆ 2 High Power IR LED's – 100' IR Range
- ◆ SD Card Slot - Supports 256GB
- ◆ Mechanical IR Cut Filter
- ◆ Dual Stream Capability
- ◆ 3D Digital Noise Reduction
- ◆ POE- Power over Ethernet
- ◆ IP66 Weatherproof

Android is a trademark of Google LLC.

HDMI[®]
HIGH-DEFINITION MULTIMEDIA INTERFACE

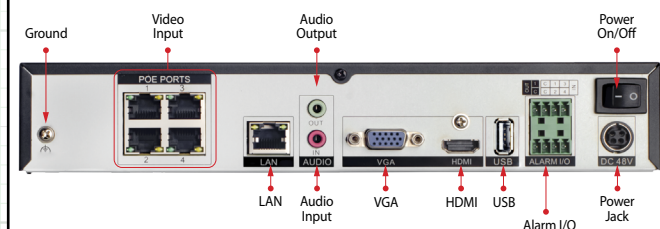
N3NVR4POE Specifications

	FEATURES	N3NVR4POE
Video/Audio Input	IP Video Input	4-Channel
	Two-Way Audio Input	3.5mm Audio Jack
	NTSC / PAL	Yes
Network	Incoming Bandwidth	40 Mbps
	Outgoing Bandwidth	40 Mbps
	Remote Connection	Up to 8 Users
Video/Audio Output	Recording Resolution	8MP / 6MP / 5MP / 4MP / 3MP / 1080p / 720p / D-1
	Frame Rate	8MP / 6MP / 5MP / 4MP / 3MP / 1080p / 720p / D-1 @ 30fps
	HDMI Output Resolution	3840 x 2160, 1920 x 1080, 1280 x 1024, 1024 x 768
	VGA Output Resolution	1920 x 1080, 1280 x 1024, 1024 x 768
	Audio Output	3.5mm Audio Jack - For Two-Way Audio Only
De-coding	Live / Playback Resolution	8MP / 6MP / 5MP / 4MP / 3MP / 1080p / 720p / D-1
	Playback Capability	1Ch-8MP / 4Ch-1080P@30fps
Recording & Playback	Compression	H.265 , H.265+, H.264, H.264+
	Record Mode Types	Manual, Schedule (Regular, Continuous), Motion Detection, Alarm In
	Bit Rate (Per Channel)	100Kbps ~ 6144kbps
	Pre & Post Recording	Auto Pre Recording based on # of Cameras Connected / Post Record (30 sec ~ 60 sec adjustable)
	Redundant Recording	N/A
	Recording Parameters	Independent for Each Channel (Resolution, Frame Rate, Bit Rate, etc.)
	Zooming	Yes - Digital Zoom Available in Live View & Playback
	Synchronous Playback	Up to 4Ch
	Playback Controls	Play, Pause, Stop, Rewind, Fast Play, Slo, FW 30s, BW 30s
	Searching	Time / Date, Alarm, Picture Grid, Event
Hard Disk	SATA	1x 12TB Max
	Capacity	2TB Installed
	HDD Detection	Built-IN SMART Detection
External interface	Network Interface	1 RJ-45 port (10/100Mbps)
	USB Interface	3x USB 2.0
	Alarm In/Out	4/1
	CMS Software	Included N2 Series CMS
PoE	Network Interface	4Ch 100Mbps
	Maximum Power	40W
	Supported Standard	IEEE 802.3af
General	Power Supply	DC48V/1.25A
	Consumption (no HDD)	< 5W
	Operating Temperature	-10 °C ~ 50 °C (14 °F ~ 122 °F)
	Operating Humidity	Less than 90% RH
	Chassis	No Rack Mount
	Dimensions	255x235x47.5mm
	Weight (no HDD)	1.98lb / 0.9kg

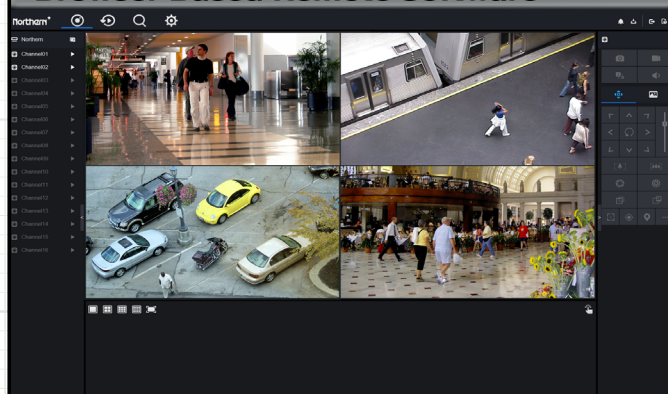
Note: Specification subject to change without notice

N3NVR Kit Series

N3NVR4 Rear Panel Definitions



Browser Based Remote Software



N2IPKITCAMSD Camera Specifications

	FEATURES	N2IPKITCAMSD
Camera	Image Sensor	1/3" Progressive Scan CMOS
	Minimum Illumination	Color: 0.1Lux @(F1.2,AGC ON) , B/W: 0Lux @(IR LED ON)
	S/N Ratio	55dB
	IR LED Count / Range / Nanometer	2 IR LED's / 100' Range / 850nm
	Shutter Time	1/5s - 1/20,000s
	Lens (IR Corrective)	Fixed 2.8mm - Angle of View 105° -
	Camera Bracket Adjustment	Pan: 0°~360°, Tilt: 0°~90°, Rotation: 0°~360°
	Day & Night	Yes - True Day/Night with IR Filter - Auto Switch
	DNR (Digital Noise Reduction)	2DNR & 3DNR, Auto / Manual (0-100 Adjustable)
	DWDR (Digital Wide Dynamic Range)	On / Off (0-100 Adjustable)
	BLC (Backlight Compensation)	On / Off (0-100 Adjustable)
Resolution Bitrate	Smart Analytic Features	Virtual Fence, Advanced Perimeter Detection
	Video Compression	H.265, H.264, MJPEG (for both stream types)
	Max. Resolution	2560 x 1440 (4MP)
	Mainstream Resolution	Main Stream: 2560x1440, 2304x1520, 1920x1080, 1280x720 @ 25fps
Network	Substream Resolution	704x576, 640x360, 480x360, 352x288 @ 25FPS
	Video Bitrate	Main: 128kbps ~ 6144kbps / Sub: 16kbps ~ 1536kbps
	Protocols	IPv4, RTSP/RTP/RTCP, TCP/UDP, HTTPS, DHCP, DNS, DDNS, UPNP, ICMP, IGMP, NTP, SMTP, 802.1x, SNMP
	General Function	Supports Mirror, Smart IR, Password Protection, Privacy Mask, Motion Detection
	Users	Up to 4 Users
Interface	Client Software	NorthernView CMS, NorthernView Mobile App, NorthernView Tools
	Web Browser	IE11, Chrome, Firefox
	Communication Interface	1 Ethernet (10/100 Base-T) RJ-45 Connector
General	Reset Button	Yes
	Onboard Storage	Yes Built in Micro SD/SDHC/SDXC slot, up to 256GB
	Power Supply	12VDC / POE (IEEE 802.3af)
	Power Consumption & Current	2W (IR LED OFF), 5W Max (IR LED ON)
	Operating Conditions	Operating Temperature -30°C ~ 50°C (-22°F ~ 122°F)
	Weatherproof Rating	IP66
	Housing Material / Color	Aluminum / White
	Overall Camera Dimensions	ø4.4" x 3.7" (ø111 x 95mm)
Weight	0.77lb / 350g	
Certifications	CE / FCC	



Note: Specification subject to change without notice